



SQUARELUX 6

A-SHAPE LED DOWNLIGHT

FOR WOOD OR STONE CEILINGS

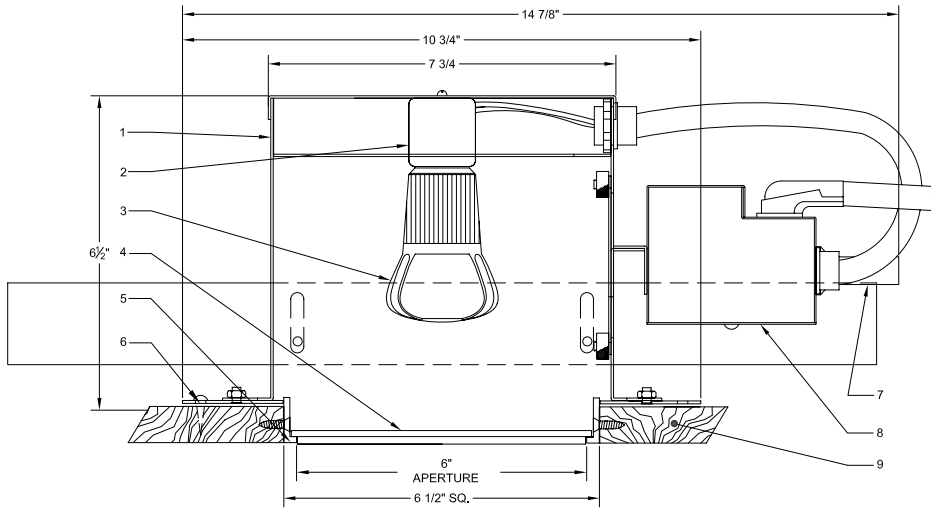
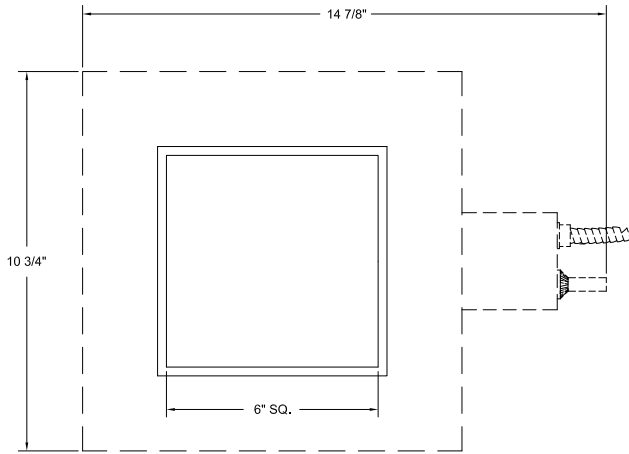
SQUARELUX 6 appears as a 6" square illuminated glass surface coplanar with a wood or stone ceiling. No flange or trim is visible from below. A two-layer laminated glass with a step at the edge drops the lens surface to the ceiling line. One 12.5W A-shape lamp produces uniform illumination of the lens. There are several glass diffusion and pattern options. SQUARELUX 6 is designed for flangeless mounting in wood or stone ceilings.

FEATURES:

- 6" x 6" square aperture
- Fixed downlight A19 lamp, 60W Max
- Individual lensing options at lamp
- Exclusive two ply glass lens
- For use with Philips EnduraLED 12.5W replacement lamp
- Non-IC thermally protected luminaire

SQUARELUX 6 is NRTL (Nationally Recognized Testing Laboratory) certified for purposes of OSHA safety standards product-approval requirements.

REFLECTED PLAN VIEW



NOTES:

1. 20 GA steel housing
2. Porcelain medium base lampholder
3. 12.5W A-shape LED replacement lamp (by others)
4. Two-ply lens
5. Metal trim/painted finish
6. Optional mounting holes
7. Thermal protector
8. Wire connection box
9. 3/4" wood or stone ceiling

Nulux's LED products use the latest LED technology from the leading manufacturers of light engines and electronic power supplies and control devices.

The technology is evolving rapidly and to ensure that the latest product offerings are used we recommend that you:

1. Contact the factory for the latest documentation when in design/specification phase of a project.
2. Review the specifications at the time of bid/purchase

ORDERING MATRIX: **SQ6-W-** _ _ _ - _ _ _ _

Application	Lamp	Interior Finish	Trim Lens	Additional Accessories
D Downlight	12.5 12.5W A-shape LED	WH White CU Custom	N None S Solite / Clear Pyrex SS Solite / Solite SL Solite / Light Etch FO Flashed Opal	N None UVC UV Coating O Other

Contact NULUX directly to specify custom products

12/16/13